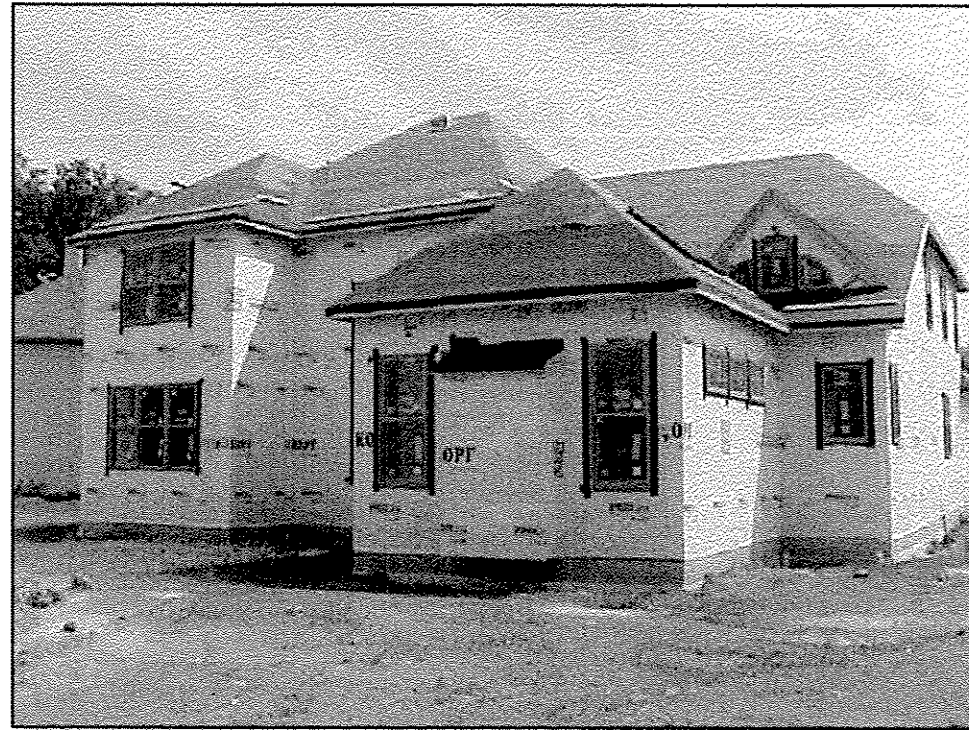




UNIT 16 FRONT



UNIT 17 FRONT



UNIT 16 REAR



UNIT 17 REAR

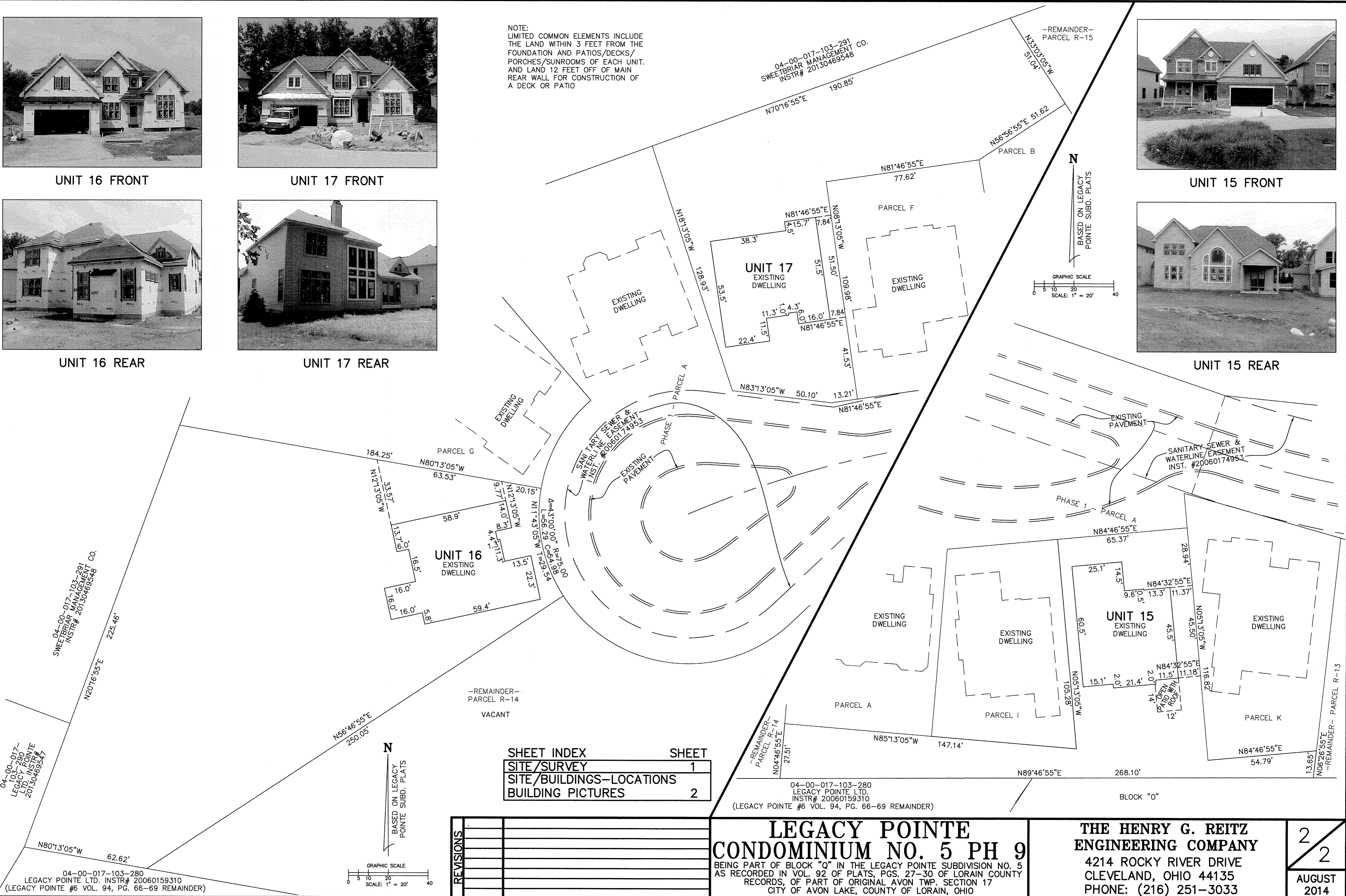


UNIT 15 FRONT



UNIT 15 REAR

NOTE:
LIMITED COMMON ELEMENTS INCLUDE
THE LAND WITHIN 3 FEET FROM THE
FOUNDATION AND PATIOS/DECKS/
PORCHES/SUNROOMS OF EACH UNIT,
AND LAND 12 FEET OFF OF MAIN
REAR WALL FOR CONSTRUCTION OF
A DECK OR PATIO



REVISIONS	DATE	DESCRIPTION

**LEGACY POINTE
CONDOMINIUM NO. 5 PH 9**
BEING PART OF BLOCK "Q" IN THE LEGACY POINTE SUBDIVISION NO. 5
AS RECORDED IN VOL. 92 OF PLATS, PGS. 27-30 OF LORAIN COUNTY
RECORDS, OF PART OF ORIGINAL AVON TWP. SECTION 17
CITY OF AVON LAKE, COUNTY OF LORAIN, OHIO

**THE HENRY G. REITZ
ENGINEERING COMPANY**
4214 ROCKY RIVER DRIVE
CLEVELAND, OHIO 44135
PHONE: (216) 251-3033

2
2
AUGUST
2014

04-00-017-103-280
LEGACY POINTE LTD. INSTR# 20060159310
(LEGACY POINTE #6 VOL. 94, PG. 66-69 REMAINDER)

04-00-017-103-280
LEGACY POINTE LTD.
INSTR# 20060159310
(LEGACY POINTE #6 VOL. 94, PG. 66-69 REMAINDER)

BLOCK "Q"