

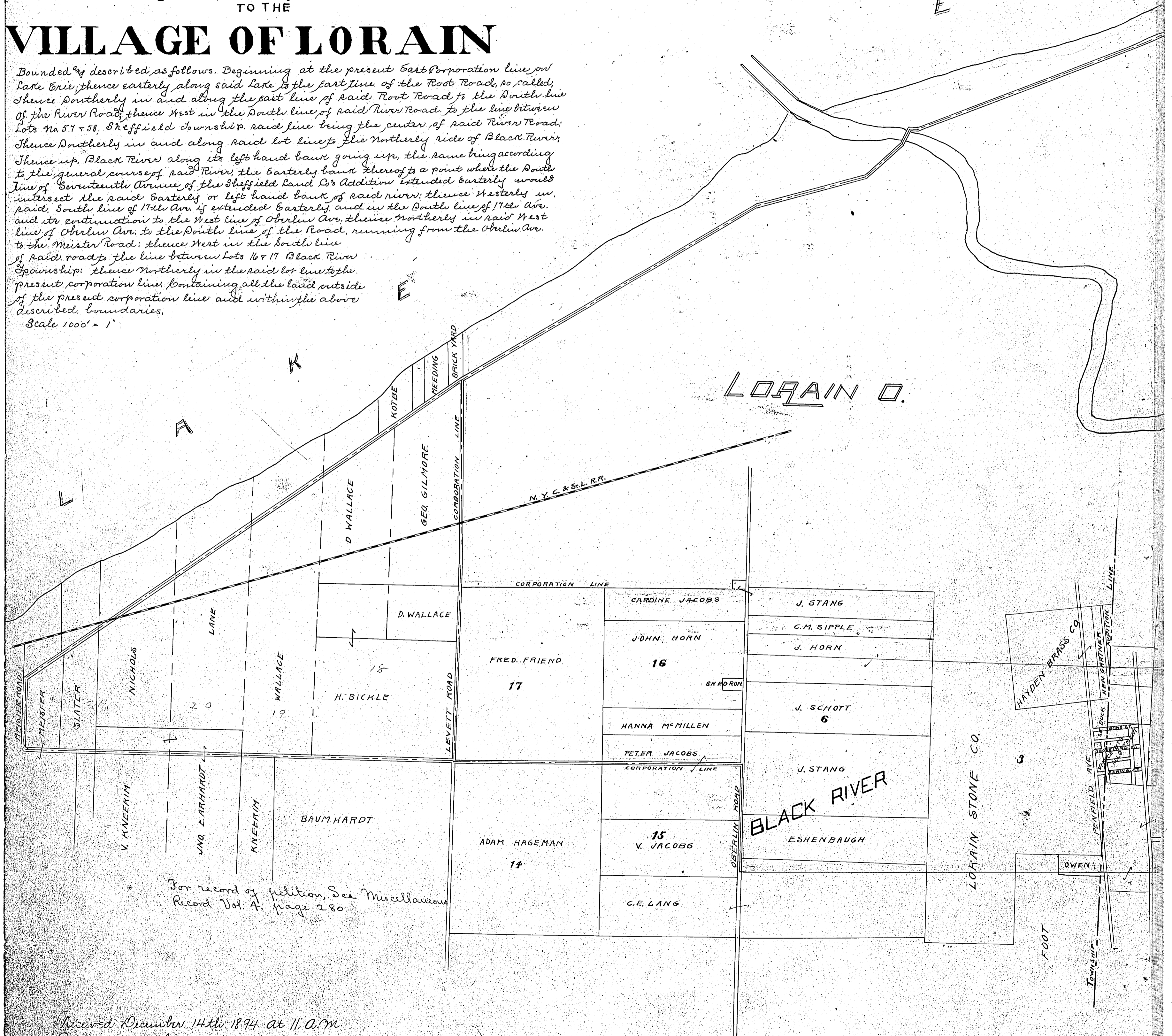
MAP

Showing Territory to be Annexed
TO THE

VILLAGE OF LORAIN

Bounded & described as follows. Beginning at the present East Corporation line on Lake Erie, thence easterly along said Lake to the East line of the Root Road, so called; thence southerly in and along the east line of said Root Road to the South line of the River Road; thence West in the South line of said River Road to the line between Lots No. 57 & 58, Sheffield Township, said line being the center of said River Road; thence southerly in and along said lot line to the northerly side of Black River; thence up Black River along its left hand bank, going up, the same being according to the general course of said River; the easterly bank thereof to a point where the South line of Seventeenth Avenue of the Sheffield Land Co's Addition extended easterly would intersect the said easterly or left hand bank of said river; thence westerly in said South line of 17th Av. if extended easterly, and in the South line of 17th Av. and its continuation to the West line of Oberlin Av. thence northerly in said West line of Oberlin Av. to the South line of the Road, running from the Oberlin Av. to the Market Road; thence West in the South line of said road to the line between Lots 16 & 17 Black River Township; thence northerly in the said lot line to the present corporation line, containing all the land outside of the present corporation line and within the above described boundaries.

Scale 1000' = 1"



For record of petition, See Miscellaneous Record Vol. 4, page 280.

Received December 14th 1894 at 11 A.M.
 Recorded March 4th 1895.
 H.J. Dahm Recorder.



THE JOHNSON Co.
AND
THE SHEFFIELD LAND Co.

SUBDIVISION NO. 1 THE SHEFFIELD LAND CO'S ADDITION	10 th	AVE.	OAK WOOD PARK
	11 th	AVE.	
	12 th	AVE.	
	13 th	AVE.	
	14 th	AVE.	
	15 th	AVE.	
	16 th	AVE.	
	17 th	AVE.	

E

F. STANDEN

W.M.A. BRAMAN

TIRRELL

J. Faragher Heirs

T. FARAGHER

H. WALLACE

H. RANDLL

48

47 RANDALL

46

GEO. DAY

W. ROOT

O. ROOT

G.W. CHAPMAN

GEO. R. CREMORE

J. WEBER

L. BURGHART

C. BURGHART

M & M.A. TAXLER

MAT & MARY WEBER

P. EIDEN

VNO. ZEIGMAN

62

63

61

60

61

62

63

64

65

E. BURRELL HEIRS

66

WM. DAY

67

F. CALEY

KATE B. MILLS

HICOCK

GEMINER

VNO CARTER

JOHN HOOSHINE

SCHOOL LOT

CHURCH

BLACK RIVER

BLACK RIVER

BLACK RIVER

BLACK RIVER

BLACK RIVER

BLACK RIVER

BLACK RIVER

BLACK RIVER

BLACK RIVER

BLACK RIVER

BLACK RIVER

BLACK RIVER

BLACK RIVER

BLACK RIVER

BLACK RIVER

BLACK RIVER

BLACK RIVER

BLACK RIVER

BLACK RIVER

BLACK RIVER

BLACK RIVER

BLACK RIVER

BLACK RIVER

BLACK RIVER

BLACK RIVER

BLACK RIVER

BLACK RIVER

BLACK RIVER

BLACK RIVER

BLACK RIVER

BLACK RIVER

BLACK RIVER

BLACK RIVER

BLACK RIVER

BLACK RIVER

BLACK RIVER

BLACK RIVER

BLACK RIVER

BLACK RIVER

BLACK RIVER

BLACK RIVER

BLACK RIVER

BLACK RIVER

BLACK RIVER

BLACK RIVER

BLACK RIVER

BLACK RIVER

BLACK RIVER

BLACK RIVER

BLACK RIVER

BLACK RIVER

BLACK RIVER

BLACK RIVER

BLACK RIVER

BLACK RIVER

BLACK RIVER

BLACK RIVER

BLACK RIVER

BLACK RIVER

BLACK RIVER

BLACK RIVER

BLACK RIVER

BLACK RIVER

BLACK RIVER

BLACK RIVER

BLACK RIVER

BLACK RIVER

BLACK RIVER

BLACK RIVER

BLACK RIVER

BLACK RIVER

BLACK RIVER

BLACK RIVER

BLACK RIVER

BLACK RIVER

BLACK RIVER

BLACK RIVER

BLACK RIVER

BLACK RIVER

BLACK RIVER

BLACK RIVER

BLACK RIVER