

Subdivision No. 1. Of The Sheffield Land Company's  
 Addition to The Village of Lorain.  
 Lorain Co. Ohio.

Scale 200 ft. to 1 inch.

LOT 88.

LOT 87.

LOT 86.

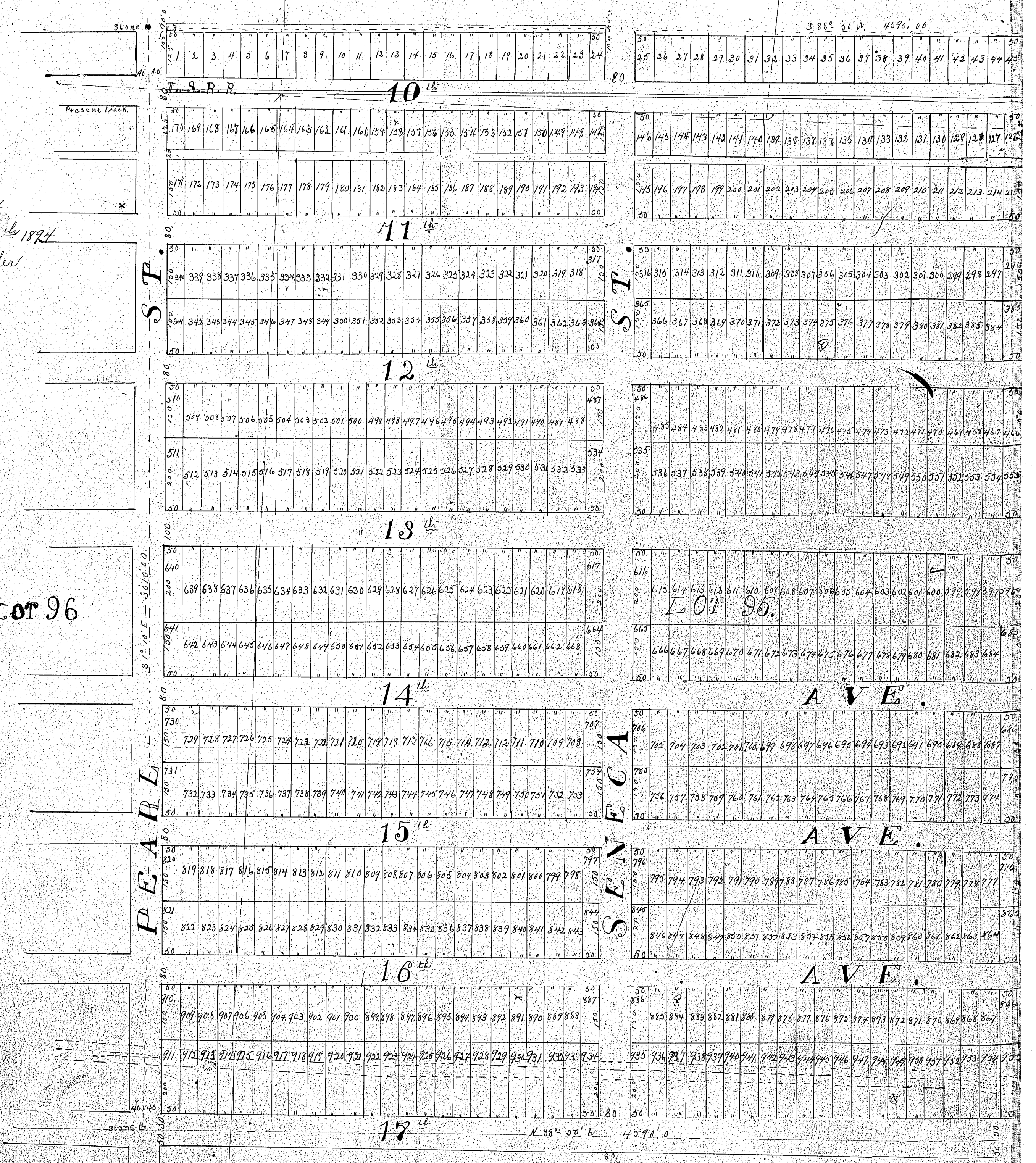
Received for Record September 13<sup>th</sup> 1894.  
 At 3.30 P.M. Recorded September 20<sup>th</sup> 1894  
 H. J. Calhoun, Recorder.

LOT 96

LOT 95.

LOT 101

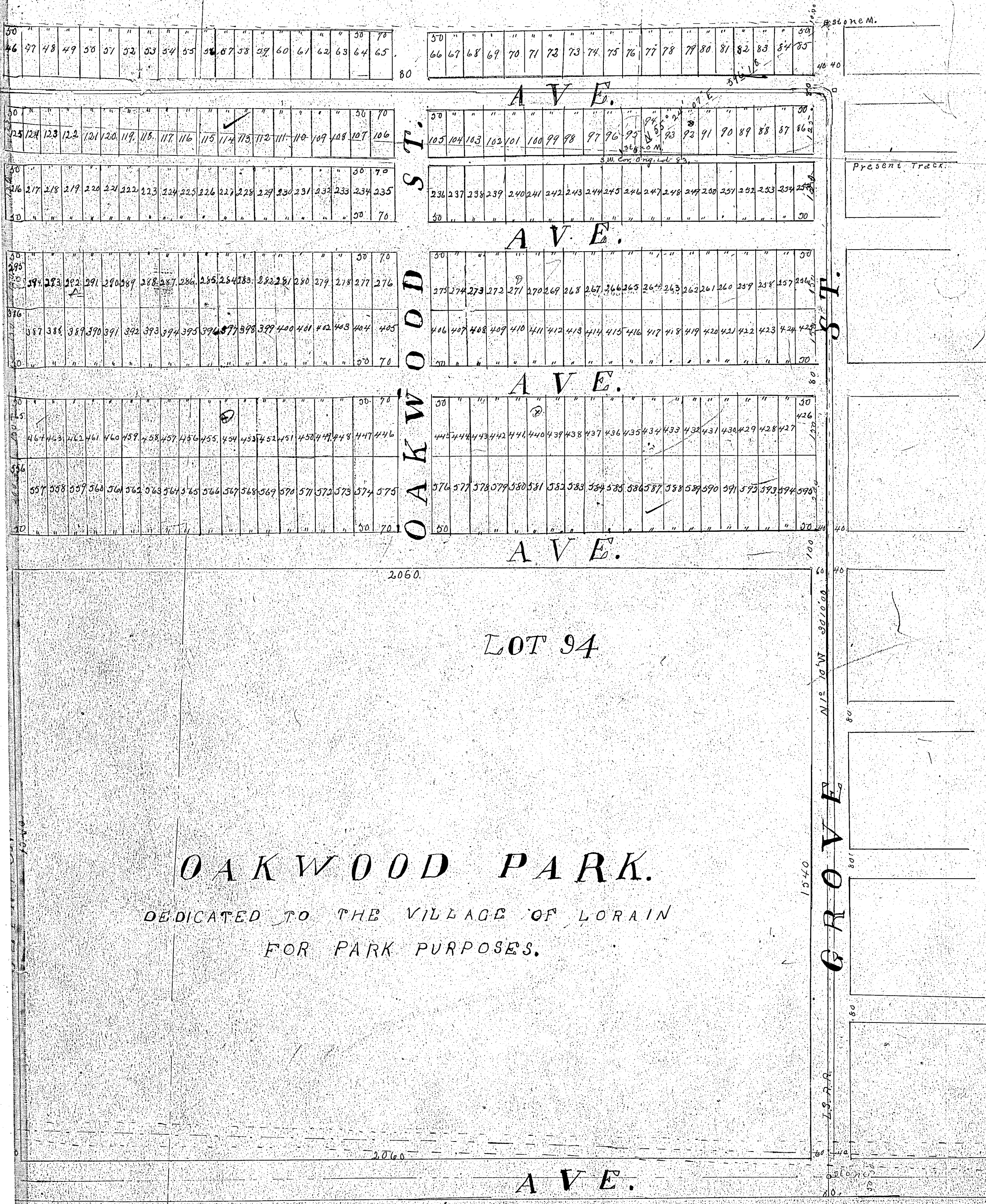
LOT 100





LOT 85.

LOT 83



# OAKWOOD PARK.

DEDICATED TO THE VILLAGE OF LORAIN FOR PARK PURPOSES.

### Description

Subdivision No. 1 of the Sheffield Land Co's Addition to the Village of Lorain, Lorain Co., Ohio, being a portion of the original Sheffield Township Lot No. 83, 85, 86, 87, 88, 89, 90, 91, 92, 93, 94, 95, 96, 97, 98, 99, 100 and 101, is bounded and described as follows: Beginning at a stone monument N 55° 24' 07" E - 576.18 ft. from a stone at the S. W. corner of said Lot 83. Running thence S 88° 00' 00" W - 88.76 ft. parallel with the center line of 10 Ave. and 1750 ft. distant therefrom to a stone monument in the center of Pearl St. Thence S. 1° 10' E - 30.10, 0.75 along the curve line of Pearl St. to a stone monument at the intersection of the center line of 17 Ave. and a line parallel with the E. line of Grove St. and 40.0 ft. West therefrom. Thence N 72° 10' W - 210.0 ft. along the center line of 17 Ave. to a stone monument at the intersection of the center line of 17 Ave. and its extension. Thence the perpendicular right-to-left and main town street car line, sewer, water and other pipes and 15 place electric wires and 15 ft. of the lines of the streets. The streets being subject to the rights granted by the Sheffield Land Co. to the Lorain Street Railway Co. by deed given.

State of Ohio, Shire of Cuyahoga, that on and before the 11th day of September 1897, at the request of the Sheffield Land Co. I surveyed and made the foregoing plat of Subdivision No. 1 of the Sheffield Land Co's Addition to the Village of Lorain, Lorain Co., Ohio, that the above is a correct plat of said subdivision, that good and sufficient stone monuments have been set at the points indicated from which future surveys can be made, that the corners are given on the plat and in the description are correct, that the streets as laid out are as shown on the plat, that the figures near the lines indicating the lines of the lots give the frontage and depth in feet and the lot numbers are indicated by the figures in the center of the lots as shown.

E. H. Johnson, Civil Engineer & Surveyor

Witness my hand and the seal of the Sheffield Land Company, this 11th day of September 1897, at Lorain, Ohio.

By Tom S. Johnson, President  
E. H. Johnson, Secretary

Witness my hand and the seal of the Sheffield Land Company, this 11th day of September 1897, at Lorain, Ohio.

E. H. Johnson, President  
E. H. Johnson, Secretary