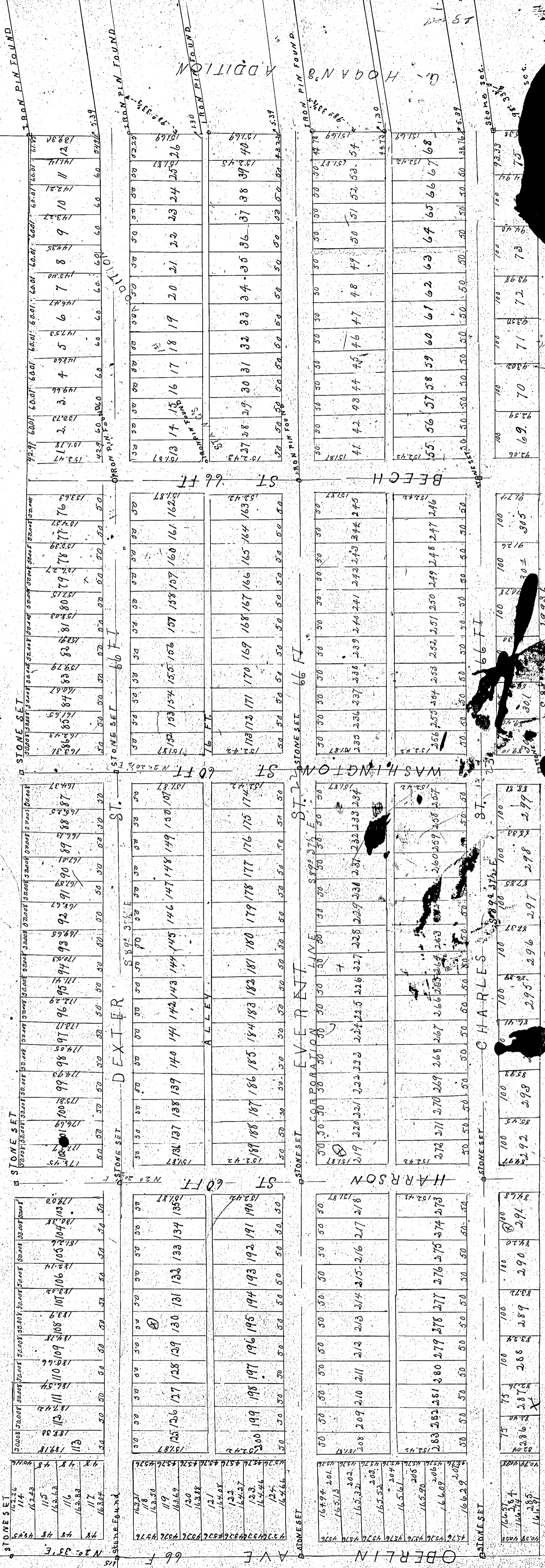


# STANG'S

## SECOND SUBDIVISION.

### LOT 6 TR. 1. BLACK RIVER TP.

Scale 150 ft. = 1 inch. Lorraine O. April 1894.



Lorraine O. May 7<sup>th</sup> 1894.

This subdivision of 64<sup>th</sup> acre of land in Lot 6 Tract 1, Black River Tp., includes all the land conveyed to John Stang by Jacob by deed recorded in Vol. 57 at page 453, Linn Co. Records except 10<sup>th</sup> Ave., which is included in Stangs' 1<sup>st</sup> subdivision and of land conveyed to Mary Stang by deed recorded in Vol. 25 at page 465 Linn Co. Records and of a part of lot 1 of Stangs' 1<sup>st</sup> Subdivision, this subdivision is bounded on the North by lands of W. S. Shreve, Jr. and of F. R. R. of the West by Charles Avenue on the South, by lands owned by G. S. Papp and on the East by G. Hagan's 4<sup>th</sup> Addition and of Stangs' 1<sup>st</sup> Addition. Dexter, Everett and Charles Streets are 66 ft. wide and are continuations of said streets as previously laid out and extend from the west line of Hagan's Addition to Charles Avenue and are parallel with the Corporation line, which is the south line of Everett St., Washington St. is 60' wide and extends from the north to the south side of this subdivision and is a continuation of same as previously laid out. Beech St. is 66 ft. wide and is a continuation of said St. as laid in Stangs' 1<sup>st</sup> Addition, Harrison St. is 60 ft. wide and is laid as shown on the map. Alley which are to be hereafter dedicated for public use. Some monuments are placed at all corners to give permanency to the map, distances are given in feet and decimals of a foot. Courses are given to give permanency to the map, which is hereby certified to be correct. C. C. Hoffmann - Surveyor

I hereby accept this plat, and dedicate Charles Everett, Dexter, Beech, Washington and Harrison Streets for public use. John Stang, Catharine Stang, - Witness - Edmund Gillmore, Frank B. Gillmore, Lorraine County Clerk. Personally appeared before me a Notary Public in and for said County John Stang & Catharine Stang husband and wife who acknowledged that they did sign the foregoing plat, and that the same is their free act and deed, for the purpose therein mentioned. Testimony whereof I have hereto set my hand and affixed my official seal at Linn this 7<sup>th</sup> day of May in the year of our Lord 1894.

Lorraine O. May 7, 1894 - Council of the Village of Linn. Having examined this map, I find that the courses and distances are consistent with that the streets and boundaries are sufficiently defined by monuments. L. A. Farrow - Burg

Received for Record May 12<sup>th</sup> 1894  
H. J. Gahorn - Recorder

Vacation - alley from 7<sup>th</sup> line of plat 14 to 15 line of plat 15, see Deed Vol. 509 p. 121