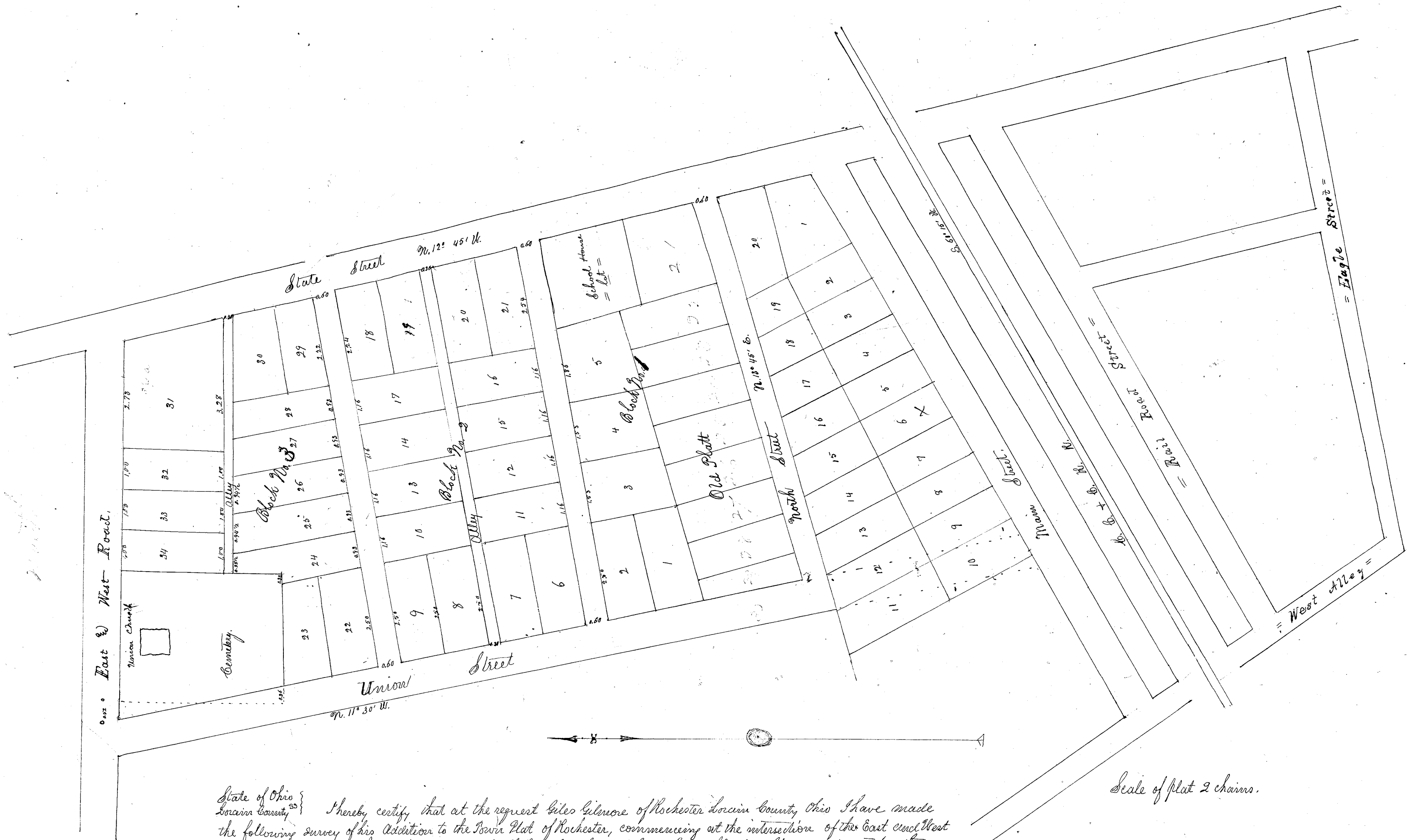


ROCHESTER.

Gillmore's Addition.



Scale of plat 2 chains.

State of Ohio }
 Lorain County }
 I hereby certify, that at the request Giles Gillmore of Rochester Lorain County, Ohio I have made the following survey of his Addition to the Town Plat of Rochester, commencing at the intersection of the East and West road with State Street thence West on said E. & W. Road 288 chains to East line of Union St. and set a stake, thence S. 11° 30' E. for East line of Union St. to a point in the North line of North St. 993 chains West from the West line of State St. The East line of this tract being the West line of State St. I then divided this tract into blocks and lots, running two streets A. & B. (with an Alley between them) at right angles to State St. running West remaining evenly to Main Union Street one A. & B. Streets are each sixty links wide, the Alley is thirty links wide. Block No. 1 embraces all lots on this tract lying South of U. St. Block No. 2 embraces all lots lying between A. & B. Streets; Block No. 3 embraces all lots lying between B. St. and East and West Road. The lots are numbered from 1 to 34 inclusive, commencing at the West end of Block No. 1 and running thence in regular order. All distances are measured and marked in chains and links. Union St. was also extended South to the North line of Main St. More particular reference may be had to the above plat, dated Rochester Dec. 12th 1862.

Samuel N. Bayhurat
 County Surveyor of Lorain Co.
 Rec. June 2^d Recorded June 4th
 1863 Henry B. Albert Recorder