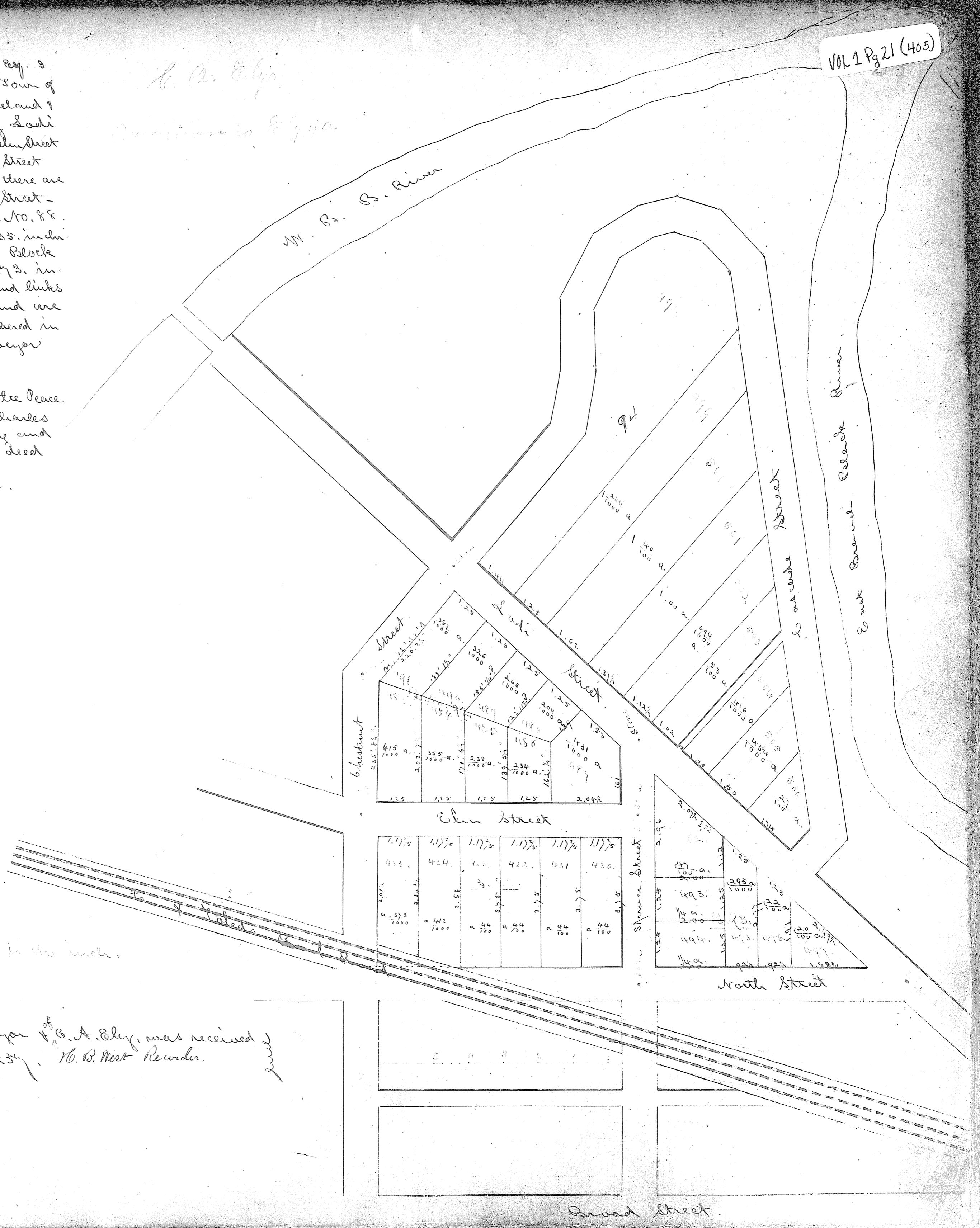


The State of Ohio  
 I hereby certify that at the request of Charles Arthur Ely Esq. I  
 have surveyed and plotted certain village lots in the Town of  
 Medina lying within and bounded <sup>on the</sup> south by North Street and the Cleveland &  
 Toledo Rail Road on the West by Chestnut Street on the North by Lodi  
 Street and on the East by Spruce Street through which is located Elm Street  
 10.00 rods wide running east & west at the intersection of Elm Street  
 with Spruce ~~Street~~ & Chestnut Streets and in the center of said streets there are  
 stone monuments 25 links south of the north line of said Elm Street -  
 that portion lying south of Elm Street is to be known as Block No. 88  
 and divided into (6) six lots and numbered from 430. to 435. inclu-  
 sive. That portion lying north of Elm Street is to be known as Block  
 No. 91. and divided into 9. lots and numbered from 465. to 473. in-  
 clusive - The distances are marked in black ink and chains and links  
 & feet and inches - The quantities are put down in black ink and are  
 in decimal parts of an acre. The Blocks and Lots are numbered in  
 red ink  
 John W. Gaxon Surveyor  
 E. A. Ely Seal  
 Medina Oct. 19. 1857.

In State of Ohio } Before me Charles W. Doolittle a Justice of the Peace  
 Lorain County ss. I in and for said County personally came Charles  
 Arthur Ely Esq who acknowledged the signing and  
 sealing of the Platt hereunto attached to be his free act and deed  
 for the uses and purposes therein mentioned.  
 Charles W. Doolittle, Justice Peace.



Scale 2 chains to the inch.

This Plat & certificate of Surveyor <sup>of</sup> E. A. Ely, was received  
 Oct. 20<sup>th</sup> and recorded Oct. 22<sup>d</sup> 1857. W. B. West Recorder.